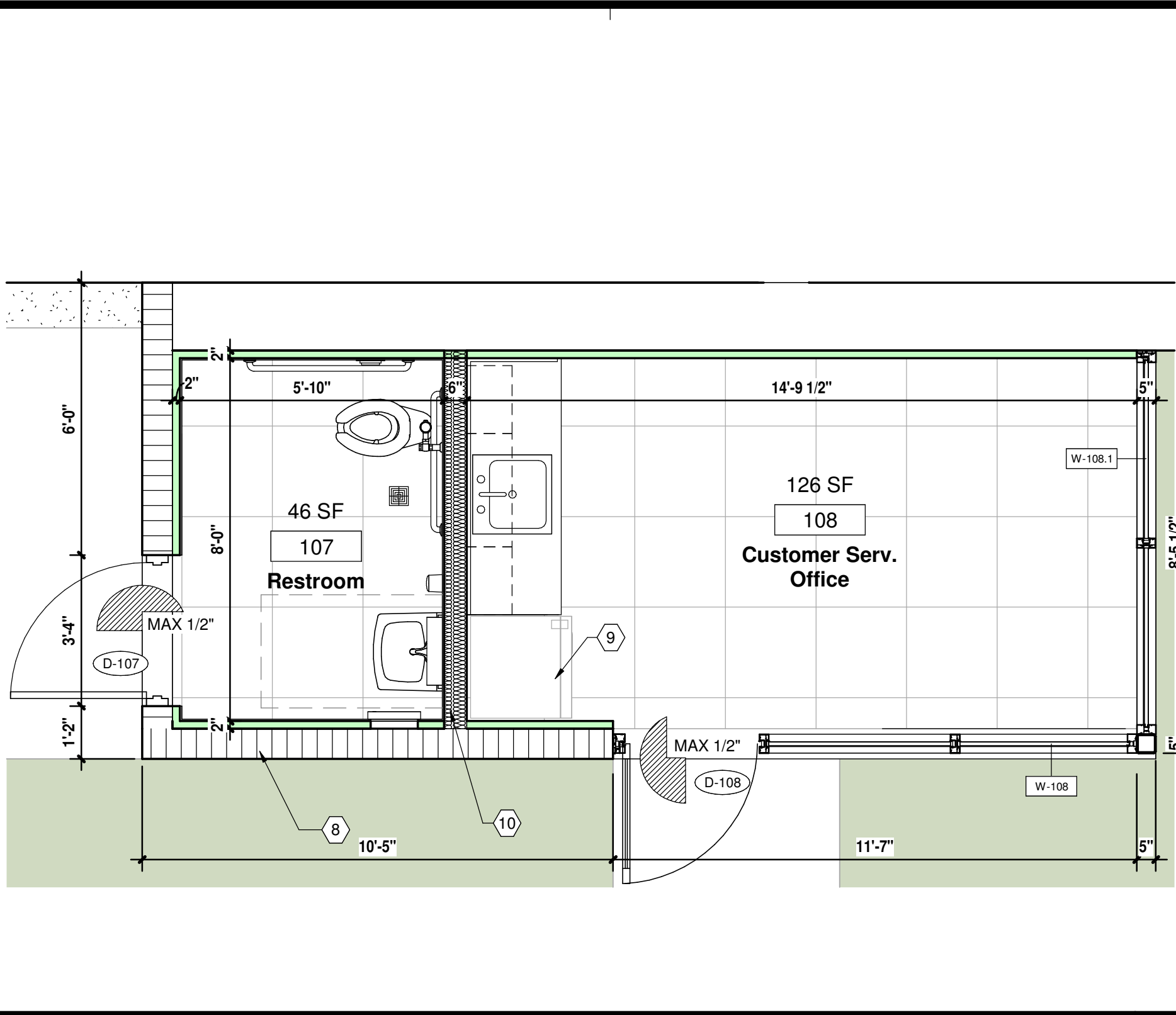


Enlarged Office Plan SCALE: 3/8" = 1'-0" 06



Enlarged Floor Plan SCALE: 3/8" = 1'-0" 05

Keynote Legend	
No.	Keynote
1	NEW STEEL TUBE COLUMNS PAINTED EP-4, PROTECT STEEL COLUMN BASE PLATE AND ALL CONCRETE EMBEDDED STEEL WITH SIKU ARMATEC 110 EPOXY. REFER TO A-5.1 DETAIL 06.
2	4" OR 6" WIDE PAINTED LANE AND PARKING STRIPING, HATCHING FOR CROSS-WALK AND HANDICAP LANES, AND 18" WIDE HASH-MARKS ON CONCRETE PARKING DESIGNS AS INDICATED WITH A MINIMUM OF 2 COATS OF D.O.T. APPROVED PAINT - COLORS TO BE "WHITE, YELLOW, OR BLUE" (TO MEET ALL D.O.T. STANDARDS FOR ROADWAY CONSTRUCTION).
3	CONCRETE DRIVEWAY REFER TO CIVIL DRAWINGS.
4	BRUSH FINISHED HANDICAP ACCESSIBLE MINIMUM 4" THICK POURED CONCRETE WALKWAYS - PROVIDE EXPANSION AND CONTROL JOINTS AS REQUIRED - SEE CIVIL ENGINEERING DRAWINGS FOR DESIGN DETAILS AND DESCRIPTION.
5	NON-MOUNTABLE 6" HIGH EXPOSED CONTINUOUS CONCRETE CURBS - TYPICAL IN ALL LOCATIONS AS SHOWN AND WHERE LANDSCAPING AREAS ADJUT ASPHALT OR CONCRETE PAVING - SEE CIVIL ENGINEERING DRAWINGS FOR DETAILS AND FULL DESCRIPTION.
6	6" RASSED CONCRETE CURB REFER TO CIVIL DRAWINGS.
7	LOCATION OF MANUFACTURED MULTI-STATION CAR WASH TUNNEL, IN THE WASH TUNNEL AND SUPPORT/CONTROL EQUIPMENT IN THE EQUIPMENT ROOM. EQUIPMENT NOT SHOWN, SEE SHOP DRAWINGS BY THE EQUIPMENT MANUFACTURER FOR FULL LAYOUT, DETAILED EQUIPMENT DESCRIPTION, DIMENSIONS, LOCATIONS, AND DRAWINGS FOR ALL REQUIRED ELECTRICAL AND PLUMBING CONNECTIONS.
8	NOMINAL 4" x 8" OR 12" WIDE, 4" HIGH x 16' LONG STANDARD CONCRETE BLOCK MASONRY UNIT WALL WITH VERTICAL AND HORIZONTAL REINFORCEMENT.
9	NO FURNITURE
10	INSTALL CONTINUOUS 3.50" (R-11) FIBERGLASS BATT INSULATION WITH VAPOR BARRIER TO WARM SIDE, PS-25 VAPOR BARRIER WHERE EXPOSED.

Keynotes 04

### CONSTRUCTION PLAN LEGEND

**NOTES:**  
PARTITION TYPES - REFER TO SHEET A-3.1

**WINDOW INDICATOR:**  
WINDOW NUMBER - REFER TO WINDOW SCHEDULE A-5.2

**DOOR INDICATOR:**  
DOOR NUMBER - REFER TO DOOR SCHEDULE FOR DIMENSIONS AND DESCRIPTION ON SHEET A-5.2

**SECTION/DETAIL MARK:**  
INDICATES "CUT LINE" FOR WALL SECTION OR DETAIL NUMBER. SEE DETAIL NUMBER (TOP NUMBER) ON SHEET INDICATED (BOTTOM NUMBER).

**INTERIOR ELEVATION:**  
INDICATES INTERIOR ELEVATION. SEE DETAIL NUMBER (TOP NUMBER) ON SHEET INDICATED (BOTTOM NUMBER).

**WALL MOUNTED FIRE EXTINGUISHER:**  
FIRE EXTINGUISHER MOUNTED TO WALL W/ WALL BRACKET W/ MP5 2A-10 BC FIRE EXTINGUISHER

**NOTES:**  
DENOTED: CHANGE IN FLOOR ELEVATION.

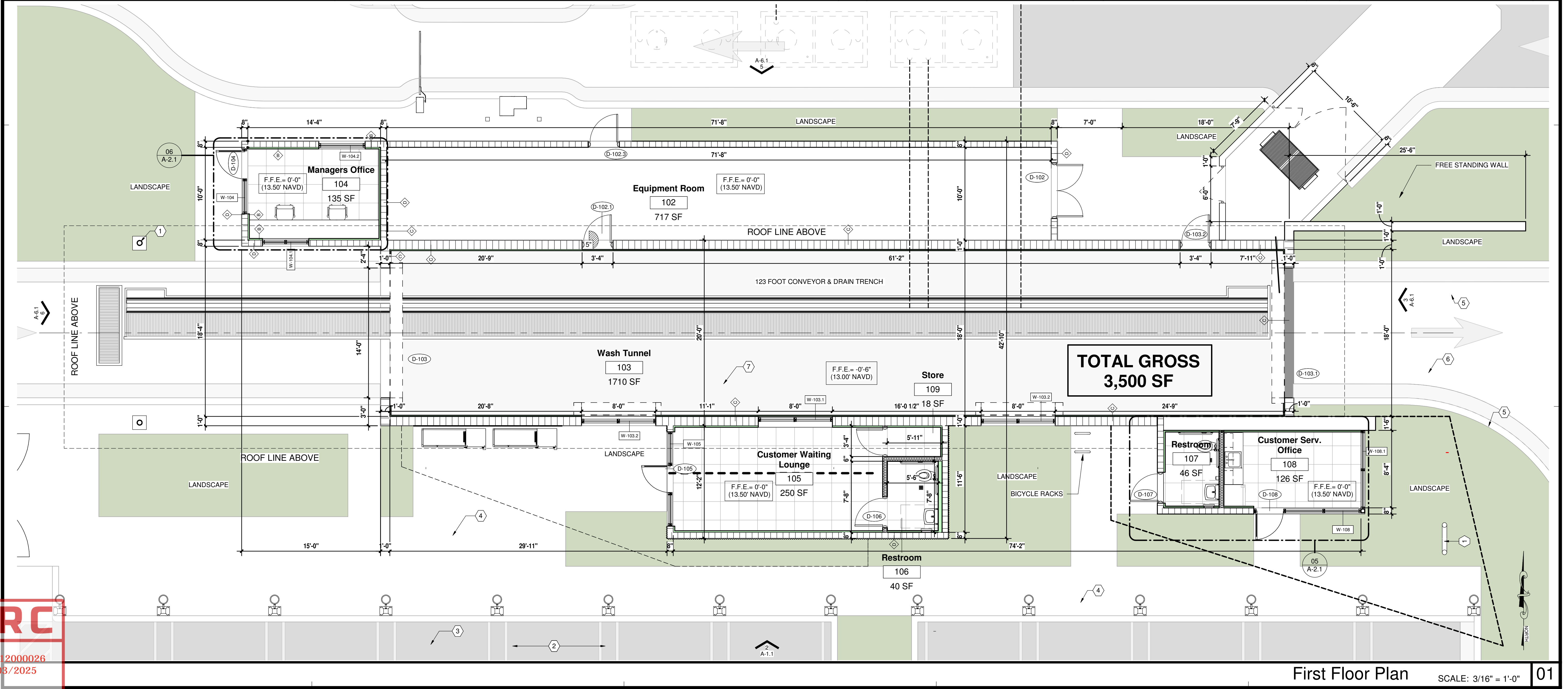
**NOTES:**  
DENOTES: ROOM NAME AND NUMBER.

**NOTES:**  
DENOTES: SLAB ELEVATIONS.

**SAFEGUARD DURING CONSTRUCTION**

- THIS PROJECT SHALL CONFORM TO ALL SAFEGUARD CONSTRUCTION REQUIREMENTS AS PER CHAPTER 33 OF THE 2010 F.B.C AND ALL PREVAILING CODES UNDER THIS JURISDICTION.
- STRUCTURES UNDERGOING CONSTRUCTION, ALTERATION, OR DEMOLITION OPERATIONS, INCLUDING THOSE IN UNDERGROUND LOCATIONS, SHALL COMPLY WITH NATIONAL FIRE PROTECTION ASSOCIATION 241, STANDARD FOR SAFEGUARDING CONSTRUCTION, ALTERATIONS AND DEMOLITION OPERATIONS.
- IN BUILDINGS UNDER CONSTRUCTION, ADEQUATE ESCAPE FACILITIES SHALL BE MAINTAINED AT ALL TIMES FOR THE USE OF CONSTRUCTION WORKERS. ESCAPE FACILITIES SHALL CONSIST OF DOORS, WALKERS, STAIRS, RAMPS, FIRE ESCAPES, LADDERS, OR OTHER APPROVED MEANS OR DEVICES, ARRANGED IN ACCORDANCE WITH THE GENERAL PRINCIPLES OF NATIONAL FIRE PROTECTION ASSOCIATION 101, LIFE SAFETY CODE. INSOFAR AS THEY CAN REASONABLY BE APPLIED TO BUILDING UNDER CONSTRUCTION.
- PER N.F.P.A. 1141 SECTION 3-9.6 AT LEAST ONE PORTABLE FIRE EXTINGUISHER HAVING A RATING OF AT LEAST 4-A, 30-BC SHALL BE WITHIN A TRAVEL DISTANCE OF 75 FT OR LESS TO ANY POINT OF A STRUCTURE UNDER CONSTRUCTION. PERSONNEL NORMALLY ON THE CONSTRUCTION SITE SHALL BE INSTRUCTED IN THE USE OF THE FIRE EXTINGUISHER PROVIDED.

General Notes 02



First Floor Plan SCALE: 3/16" = 1'-0" 01

**DRC**  
PZ25- 12000026  
12/03/2025

**CONSULTANT**

STATE OF FLORIDA  
REGISTERED ARCHITECT

Gregory B. Molina

FL REG. # AR93354

DATE: 10-27-25

COPYRIGHT © 2025  
ALL RIGHTS RESERVED. THIS DOCUMENT  
ORIGINAL OR PARTS THEREOF, MAY NOT BE  
REPRODUCED IN ANY FORM WITHOUT  
WRITTEN CONSENT FROM GBM ARCHITECTURE PA.

**GBM**

ARCHITECTURE PA

ARCHITECTURE  
MASTER PLANNING  
AA26003322

330 HIMMARSHEE ST,  
SUITE 103  
FORT LAUDERDALE,  
FLORIDA 33312

E: GREG@GBMARCHITECTURE.COM  
WEB: WWW.GBMARCHITECTURE.COM  
T: 954.999.5633

**DRC SUBMITTAL**  
RISING TIDE

2901 W ATLANTIC BOULEVARD  
POMPANO BEACH FL 33069

**DRAWING ISSUE DATES:**

CIVIL CORD 07-14-21

**FLOOR PLAN**

**SHEET**  
A-2.1

**PROJECT** 250225  
**DATE** 10-27-25  
**PERMIT NO.**